

Newsletter

What a start to the year! This first half term has certainly flown by and I have to say how busy all the children have been working hard and making great progress with their learning. School has been calm and collected with a buzz of productivity about it and the children have really responded to some of the new routines and structures that we've put in place.



ELKLAN : Colourful Semantics

We delivered our final staff training on colourful semantics. ELKLAN uses an approach for children to dual code different parts of sentence or story. It uses visual prompts to support children in knowing the different parts of a sentence and reminds them of what they wanted to say. It's part of a Speech and Language tool used to support children who may have difficulty in communicating.

Shine a Light on Services: BOSS Team

BOSS stands for Behaviour Outreach Support Service and are a team of professionals from the Local Authority who can be deployed into school to support with challenging behaviour and offer advice and guidance on provision to put in place. A lot of their work focuses on understanding triggers for behaviour and putting things in place to prevent children from reaching crisis point. BOSS also run training for school staff and also run interventions for children in some cases.

<https://www.doncaster.gov.uk/send-toolkit/support-services-behaviour-outreach-boss>



Meet Jill Braidwood...

Jill is our designated BOSS worker. She works in school to advise us on provision in school. Jill takes a holistic view of the child she is working with and will speak to parents/carers, the children themselves and school staff to get an oversight of causes and possible triggers for behaviour.

Showcase - SEND Network

I was immensely proud to be asked to speak at the SENDCo and Inclusion Managers' Network in June about parental engagement and the steps that we are taking to engage with our parents and carers. It was a great opportunity to share our best practice with Doncaster and also open up a forum to discuss ideas and strategies that other schools are using.



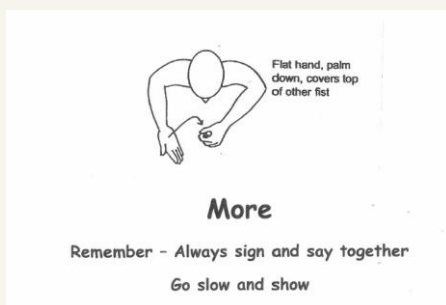
ELKLAN: COMMUNICATION FRIENDLY SETTING (CFS)

The end is in sight! We're so close to being accredited with our Communication Friendly Setting award from ELKLAN. We now just need to be audited by one of our peer schools in order to tick the last few boxes and showcase how we have implemented the strategies into our whole school environment. It's been really impactful training and the effects should continue to be embedded across school over the next year.

Did you know...

attendance of children with SEND across school is currently below national averages for the same group. We want to work together to support an increase in the attendance of our SEND pupils and would welcome any feedback about the barriers to the attendance of children with SEND. I'd welcome any feedback about barriers for children with SEND linked to attendance.

Makaton Sign of the Term



SEND Support Plan Reviews: W/C 20th Oct & 3rd Nov

**Important
Dates**

Wednesday 5th November – School reopens for children

Next half term – School Wide Boccia Tournament